

Tubes

POST-OP INSTRUCTIONS

EAR, NOSE & THROAT
CONSULTANTS



PAIN: Patients may have some ear pain the day of surgery. Use acetaminophen and/or ibuprofen as needed for pain (follow dosing instructions on label).



DRAINAGE AND EAR DROPS:

Drainage is expected for up to 3 days after surgery. It may be clear or bloody appearing. Use the prescribed drops for one week to aid in resolving the drainage. Any future drainage is a sign of an ear infection, and you should start the antibiotic drops immediately (oral antibiotics are rarely needed for ear drainage alone). Continue the drops for at least 2 days past when the drainage stops. If drainage does not resolve, within one week of starting the drops, call the office to speak with an ENT nurse.



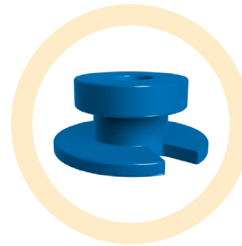
WATER PRECAUTIONS: It is ok to bathe, shower or swim in a pool with tubes in place. However, if the ears are draining, they are painful or you are swimming in a lake/river/ocean, we recommend wearing ear plugs or

avoid submerging your head under water. If water does get into the ears, use the prescribed antibiotic drops, when you are done swimming. Do not irrigate the ears with tubes in place. If the ears appear plugged, or there is excessive wax, please contact our office to be seen.

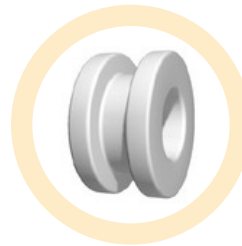


FOLLOW UP: You will likely follow up in our office in approximately 1 month. After that, it is important to follow up 1-2 times a year to ensure the tubes do come out on their own and the ear

drum heals appropriately. Typical tubes (paparella or reuter bobbin) stay in place for 9-18 months; while t-tubes may stay in place for several years.



PAPARELLA TUBE



REUTER BOBBIN



T-TUBE

WE ARE HERE FOR YOU

Please don't hesitate to contact our office at **605-217-4320**, if you have any questions or concerns. We are happy to assist you.

If you are unsure of an emergency and it is outside of business hours, please call the operator at Unity Point at **712-279-3500** and ask for the ENT on-call.

TRUST. EXCELLENCE. PROFESSIONALISM. DEDICATION. COMMITMENT.

101 TOWER ROAD, SUITE 120, DAKOTA DUNES, SD 57049 • ENTCONSULTANTS.NET